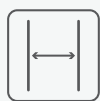


# Enhanced Grain SB

## Product specification guide



Square-edge profile



Smaller width



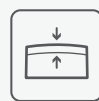
Versatile design



Hand moulded & coloured



Natural wood look



Integrated Lastane layer



'Lost-head' screws



High slip-resistance

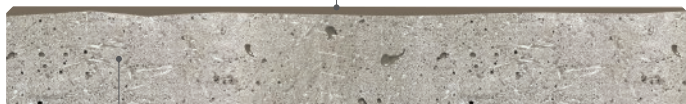


Recycled materials

## Enhanced Grain SB Board Details

### Surface Composition:

Resilient Lastane® layer chemically melded to the core, with a UV stable 2K coating.



### Core Composition:

Blend of natural minerals bonded in a polymer resin, with long fibre reinforcement.

### Weight:

18.7lb per board  
(8.5kg)

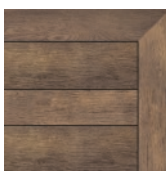
### Coverage:

0.2 boards per ft²  
(2.14 boards per m²)

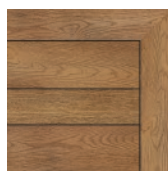
### Dimensions:

5" (W) x 141.7" (L) x 1.3" (D)  
(126 x 3600 x 32mm)

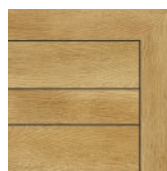
### Available colours:



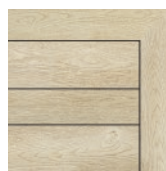
Antique Oak  
MDE126A



Coppered Oak  
MDE126C



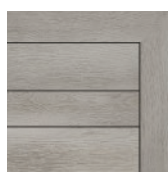
Golden Oak  
MDE126G



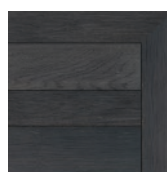
Limed Oak  
MDE126L



Brushed Basalt  
MDE126B



Smoked Oak  
MDE126D



Burnt Cedar  
MDE126R

### Working Specification

For all applications we recommend a 5/32" (4mm) space between the sides of boards or 7/32" (6mm) if using the DuoFix side-fixing guide and 1/32" (1mm) gap at the ends on butt joints. A 3/8" (10mm) gap should be left between the boards and any abutting vertical surface to facilitate drainage.

The maximum unsupported overhang for the boards is 2" (50mm) and each cut board must be supported by a minimum of three joists. Where a board crosses a joist, two DuraFix® screws will be needed. At the end of the boards, we'd recommend three DuraFix® screws.

### Residential applications

52lb/ft<sup>2</sup> uniform distribution load  
(2.5kN/m<sup>2</sup>)

Joists must support boards at 15.5" (400mm) centers if boards are at 90° to joists, if boards are at 45° then joists need to be set at 11.5" (300mm) centers.

### Commercial applications

465lb/ft<sup>2</sup> uniform distribution load  
(5kN/m<sup>2</sup>)

Joists must support boards at 11.5" (300mm) centers if boards are at 90° to joists, if boards are at 45° then joists need to be set at 9.5" (240mm) centers.

## Enhanced Grain SB Accessories



#### Durafix screws

Material: A2 Stainless Steel  
Size: 0.2 x 1.4" (4.5 x 35mm)  
Pack Quantity: 100  
Code: FT35P100  
Use: Fastening Fascia boards

Size: 0.2 x 1.8" (4.5 x 45mm)  
Pack Quantity: 250  
Code: FT45P250  
Use: Fastening decking onto Plas-Pro or DuoSpan

Size: 0.2 x 2.4" (4.5 x 60mm)  
Pack Quantity: 250  
Code: FT60P250  
Use: Fastening decking onto timber

#### Fascia board

Width: 5.8" (146mm)  
Length: 11' 9.8" (3600mm)  
Depth: 0.6" (16mm)  
Weight: 14.11lb (6.4kg)  
Coverage: 0.17 boards per ft<sup>2</sup>  
(1.85 boards per m<sup>2</sup>)

Construction: Polymer resin core/  
Elastomer surface layer

Antique Oak: MFN360A  
Brushed Basalt: MFN360B  
Burnt Cedar: MFN360R  
Coppered Oak: MFN360C  
Smoked Oak: MFN360D  
Golden Oak: MFN360G  
Limed Oak: MFN360L

#### Enhanced Grain decking board

Width: 6.9" (176mm)  
Length: 11' 9.8" (3600mm)  
Depth: 1.3" (32mm)  
Weight: 26lb (11.8kg)  
Coverage: 0.14 boards per ft<sup>2</sup>  
(1.54 boards per m<sup>2</sup>)

Construction: Polymer resin core/  
Elastomer surface layer

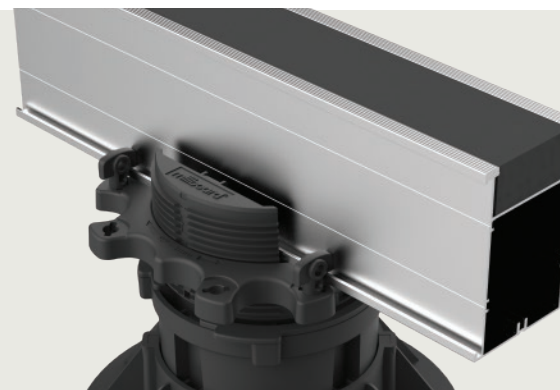
Antique Oak: MDE176A  
Brushed Basalt: MDE176B  
Burnt Cedar: MDE176R  
Coppered Oak: MDE176C  
Smoked Oak: MDE176D  
Golden Oak: MDE176G  
Limed Oak: MDE176L

## Subframes & fixings

To view the complete range of Enhanced Grain products available please visit our website:

[millboard.com/decking/enhanced-grain-sb](http://millboard.com/decking/enhanced-grain-sb)

[View Accessories](#)



The information in this document was correct at the time of going to print, due to our culture of continuous improvement we reserve the right to change the information at any time without prior notice should further tests reveal different results.

The Millboard Company Ltd

UK Head Office, Castle Court, Bodmin Road, Coventry, United Kingdom, CV2 5DB

Company registered No. 06061318 VAT No. 980 616602 Edition: 2023 v1.3

